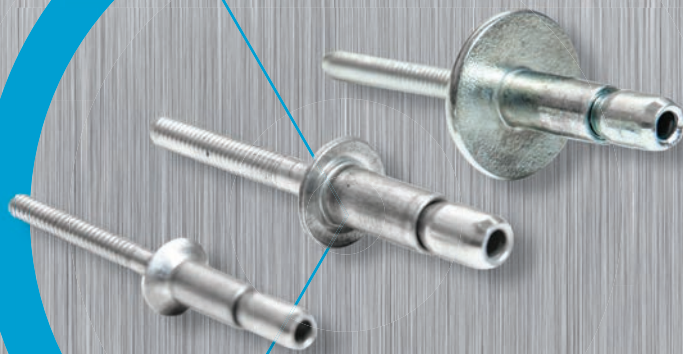


GESIPA® MEGA GRIP®

The GESIPA® MEGA GRIP® is a high strength structural blind rivet with a wide grip range.



The experts in blind riveting



- Mechanically locked mandrel head
- Excellent hole fill property
- Anti-rattle and weather resistant joint
- Suitable for heavy duty application



High strength blind rivets with large grip range and optimal cost effectiveness

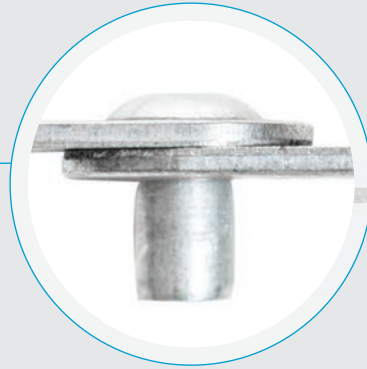
Wider Grip Range

The variable grip range allows one MEGA GRIP® dimension to replace up to five standard blind rivets saving considerable assembly time and costs.



High shear and tensile strength

High shear and tensile strength provides a highly secure and anti-rattle joint in the application.



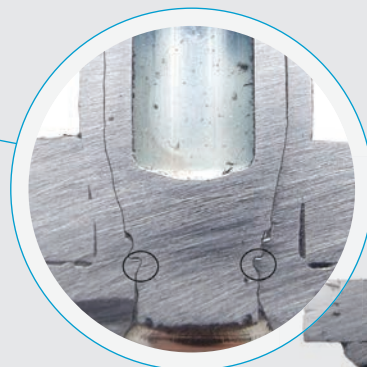
Excellent hole filling properties

Mechanically locked mandrel head also gives an excellent hole filling property providing a weather resistant joint.



Mechanically locked mandrel head

Mechanically locked mandrel head provides high strength and clamp force leading to anti-rattle and vibration resistant joint.



Key Features and Advantages

Provides high application strength.

Secure Joint.

Anti-rattle and weather resistant joint.

Reduced assembly time provides quality and cost saving benefits.

Fast and easy installation.

Replaces conventional fastening methods particularly where there is no access to the blind side of the application.

Wide range of installation tools can be used to set MEGA GRIP®.

Can be set using a standard or a special nosepiece.

Product Specification

The GESIPA® MEGA GRIP® is available in:

Material combinations of:



Steel

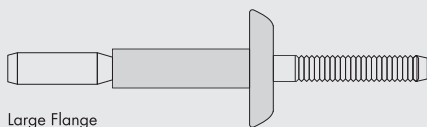


Aluminium

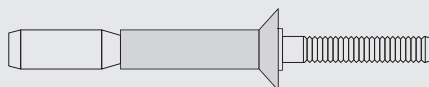


Stainless Steel

Head Styles:



Large Flange



Countersunk



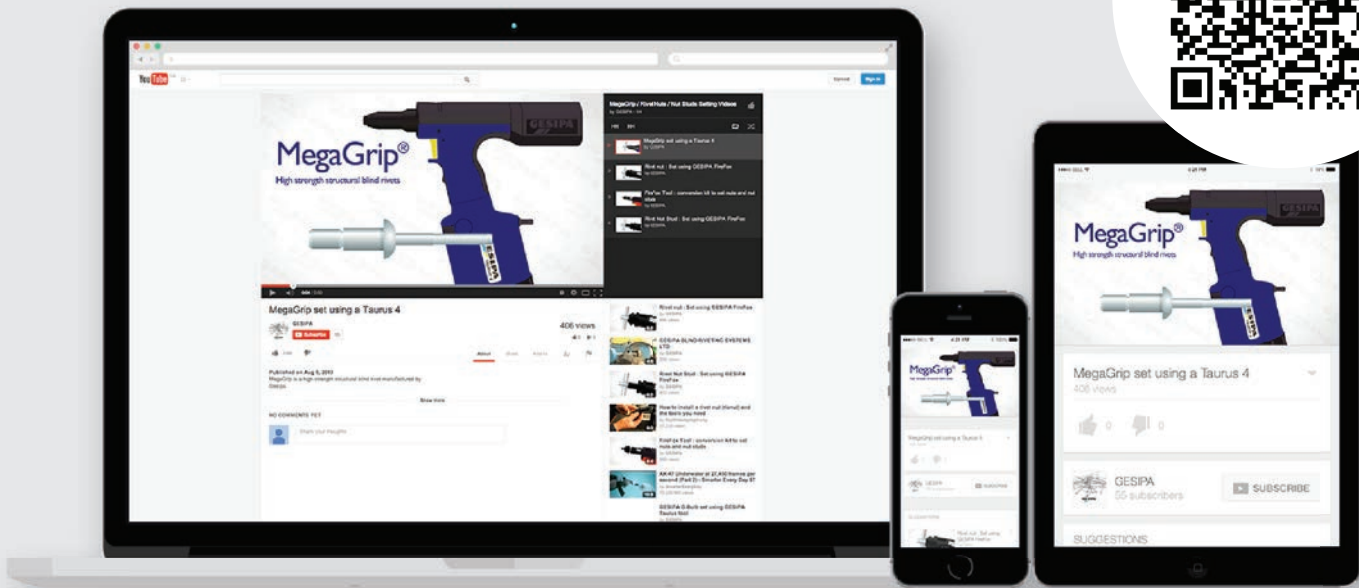
Standard (Dome)

Mandrel free length can be controlled to allow setting with an extended nosepiece.

Supplied in bulk and small packages as standard catalogue items, GESIPA® MEGA GRIP® is also available in any specific quantity requirements.

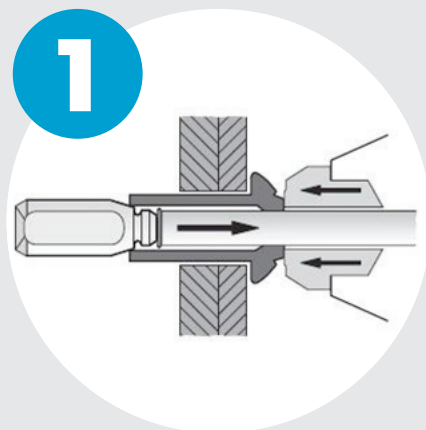
GESIPA® can also manufacture bespoke application specific dimensions and special coatings (Zinc Ni, under-head sealing etc.) on request.

Installation Video



Scan the QR code to watch videos about installation of the MEGA GRIP®. All you need is a smartphone, a tablet PC or a laptop with an integrated camera as well as the appropriate software designed to read QR codes.

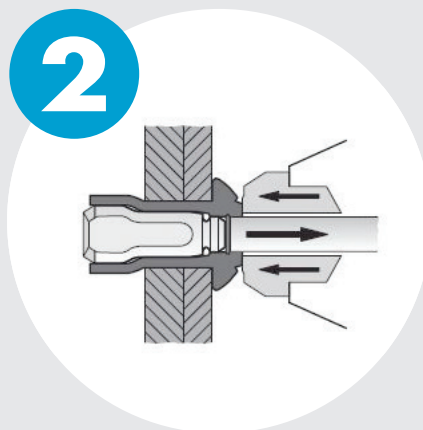
Setting Process



Fastener placed into the prepared hole

Installation tool is placed over the fastener mandrel.

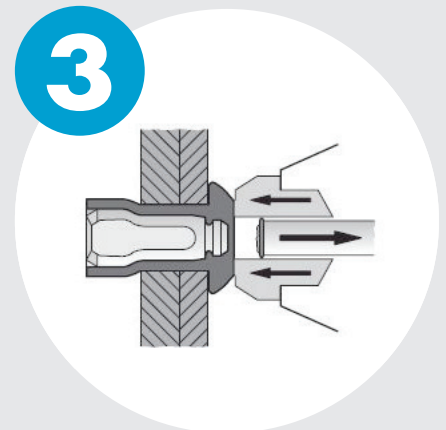
Installation tool activated



Tool trigger is pressed and deforming of blind side begins.

The eyelet expands on the blind side pulling the sheets of material together.

Joint tightened

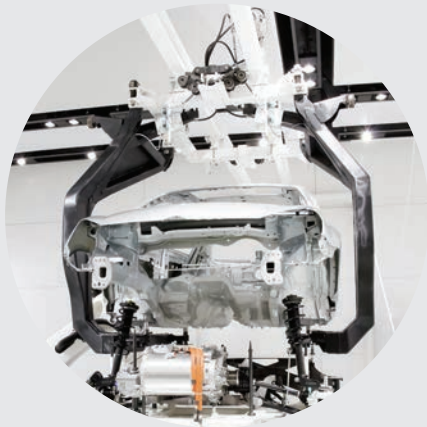


Internal locking mechanism between the mandrel and eyelet is formed which permanently locks them together.

Mandrel breaks

Possible Applications

Due to high shear and tensile strengths, excellent anti rattle and weather resistant properties MEGA GRIP® can be used to fasten heavy duty applications in a variety of industries.



Automotive applications
e.g. Body-in-white

Cabinets and enclosures
e.g. Switch gear cabinets

Commercial vehicle body building
e.g. panels, chassis etc.

Domestic appliances

Heating and ventilation

Marine applications / shipbuilding

Trailer Building
e.g. Tail Lifts

Shelving systems

Containers

Road Signs

Modular Building

Contact Us



Dalton Lane
Keighley
West Yorkshire
BD21 4JU



T +44 (0) 1535 212200



F +44 (0) 1535 212232



info@gesipa.co.uk



www.gesipa.co.uk

GESIPA® Offices World Wide



A company of the **SFS** group